



Sage[®]

the InFizz™ Fusion

BCA800 / SCA800

BILT × **Sage**



 Safety Guide

EN CONTENTS

- 02 - Guarantee
- 02 - Sage™ recommends safety first
- 02 - Safety guidelines
- 04 - Components
- 04 - Accessories
- 05 - Before first use - Care & Cleaning
- 06 - Gas canister placement
- 07 - Carbonating water
- 08 - Carbonating non-water drinks
- 10 - Troubleshooting

GUARANTEE

2 YEAR LIMITED

Sage Appliances guarantees this product for domestic use in specified territories for 2 years from the date of purchase against defects caused by faulty workmanship and materials. During this guarantee period Sage Appliances will repair, replace, or refund any defective product (at the sole discretion of Sage Appliances).

All legal warranty rights under applicable national legislation will be respected and will not be impaired by our guarantee. For full terms and conditions on the guarantee, as well as instructions on how to make a claim, please visit www.sageappliances.com

SAGE™ RECOMMENDS SAFETY FIRST

At Sage™ we are very safety conscious. We design and manufacture appliances with your safety foremost in mind. We also ask that you exercise a degree of care when using any electrical appliance and adhere to the following precautions.

SAFETY GUIDELINES



Keep clean and store the bottle with the lid off.



WARNING



Never attempt to carbonate an empty bottle.



Never use a bottle that's deformed, discolored, or scratched.



Never put the bottle in the freezer.



Don't transport the InFizz™ Fusion with the gas Canister installed.



Do not carbonate milk based products.



Do not put ice in the bottle.



Use InFizz™ Fusion compatible carbonating bottles **ONLY**.



Never clean the bottle in the dishwasher.



Do not leave the InFizz™ Fusion and/or the bottle in direct sunlight or too close to a window.



Do not place the InFizz™ Fusion next to a heat source.



Do not place the InFizz™ Fusion close to open flames of any sort.



Do not use the InFizz™ Fusion and/or the bottle in extreme temperatures.



Do not use the bottle after its expiration date.

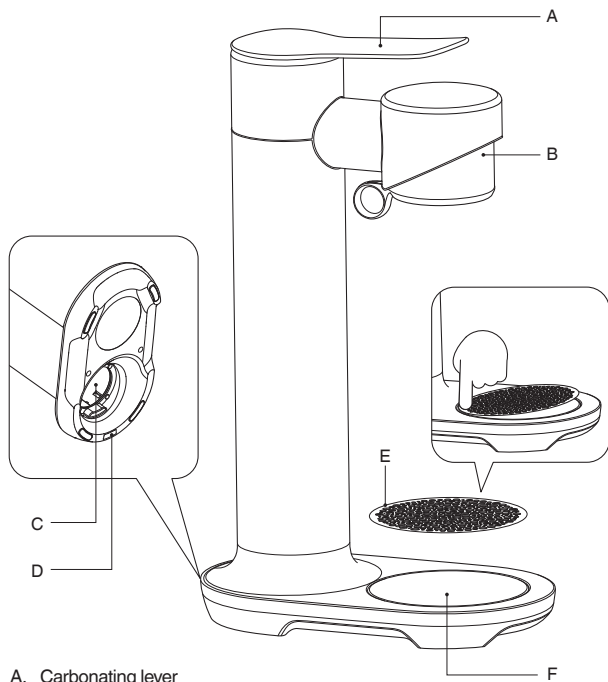
CARBON DIOXIDE CO₂ CANISTER

To reduce the risk of a CO₂ leak, personal injury and property damage:

- In the event of a CO₂ leak, ventilate the area, breathe fresh air and if feeling unwell seek immediate medical attention.
- Do not insert a CO₂ Canister into the InFizz™ Fusion when a bottle is installed.
- Do not remove a CO₂ Canister from the InFizz™ Fusion when it is being operated.
- Do not remove bottle during carbonation.
- Do not handle or remove a CO₂ Canister while it is discharging CO₂.
- Do not use if damaged. Inspect the CO₂ Canister and CO₂ Canister valve prior to use for dents, punctures, or other damage. If damaged, contact an authorised service representative.
- Do not tamper with the CO₂ Canister in any way, including puncturing, incinerating or removing the valve.
- Do not expose the CO₂ Canister to heat above 120°F / 50°C. Protect from sunlight. Store in a well-ventilated area.

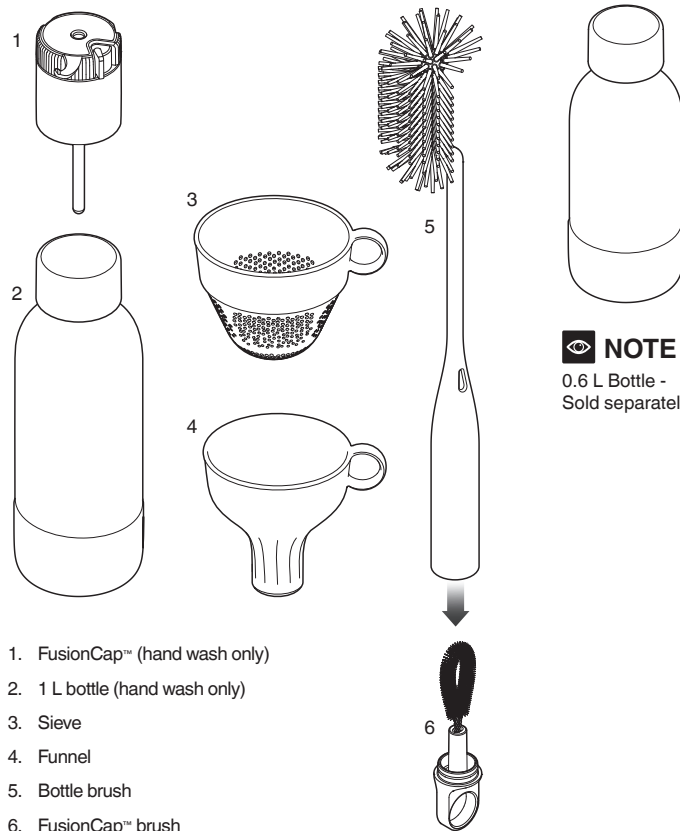
SAVE THESE INSTRUCTIONS FOR HOUSEHOLD USE ONLY

COMPONENTS



- A. Carbonating lever
- B. Tilt head with ring pull
- C. Gas cylinder compartment
- D. Flat surface safety switch to ensure a flat surface is used
- E. Removable drip tray cover (hand wash only)
- F. Drip tray

ACCESSORIES

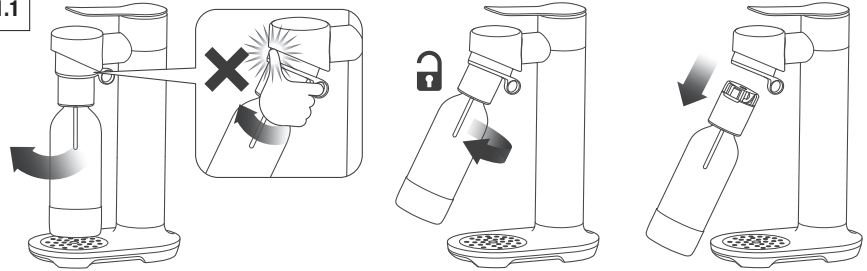


- 1. FusionCap™ (hand wash only)
- 2. 1 L bottle (hand wash only)
- 3. Sieve
- 4. Funnel
- 5. Bottle brush
- 6. FusionCap™ brush

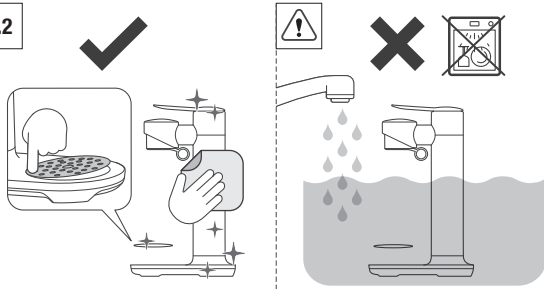
NOTE
0.6 L Bottle -
Sold separately

1. BEFORE FIRST USE CARE & CLEANING

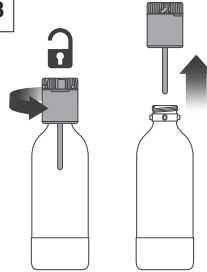
1.1



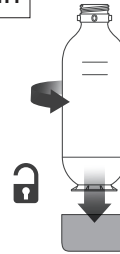
1.2



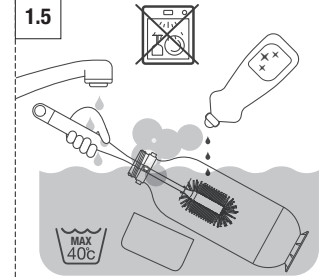
1.3



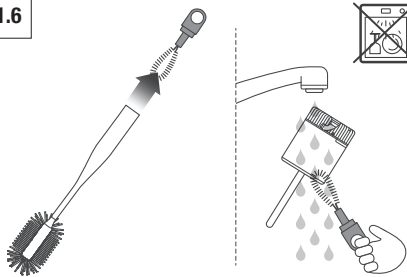
1.4



1.5



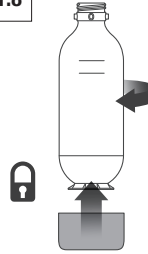
1.6



1.7



1.8

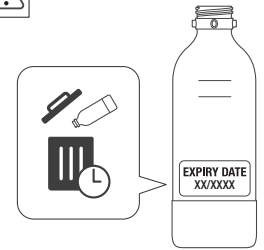


1.9



Keep clean and store the bottle with the lid off.

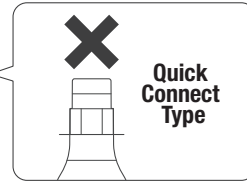
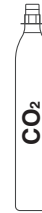
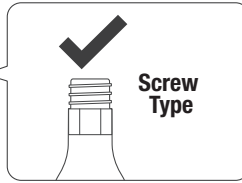
!



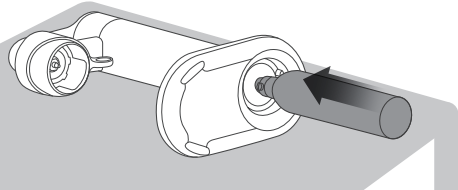
2.

GAS CANISTER PLACEMENT

2.1

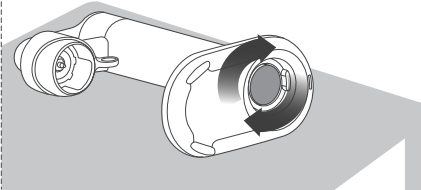


2.2



2.3

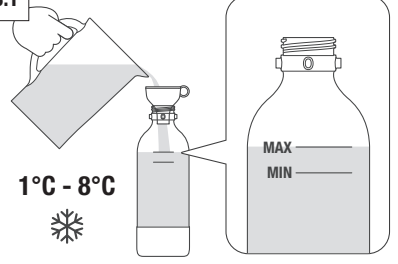
Gently turn the canister in a clockwise motion until screwed in.



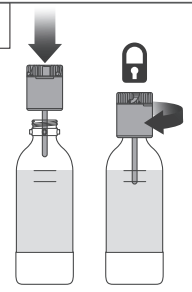
3.

CARBONATING WATER

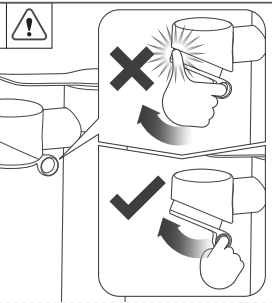
3.1



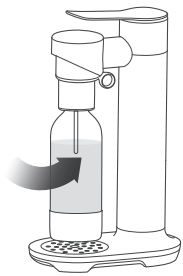
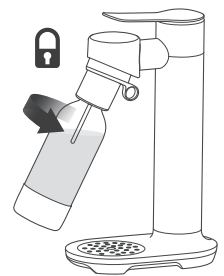
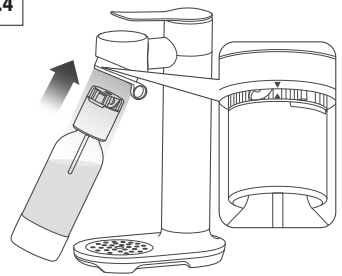
3.2



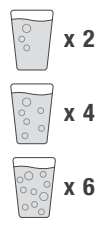
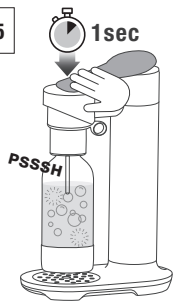
3.3



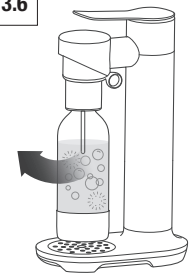
3.4



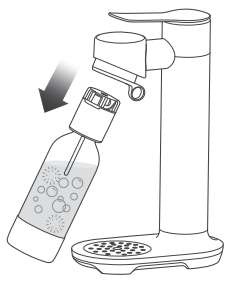
3.5



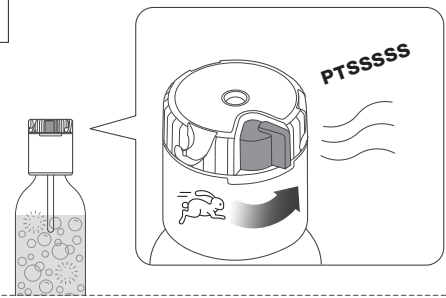
3.6



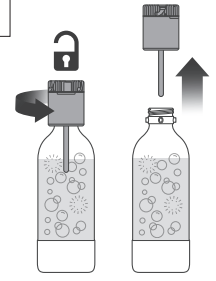
3.7



3.8



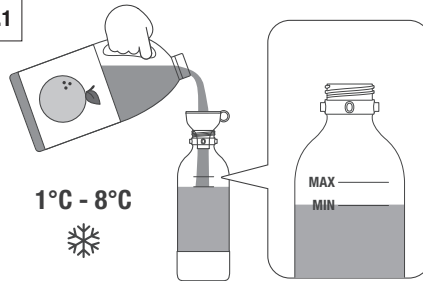
3.9



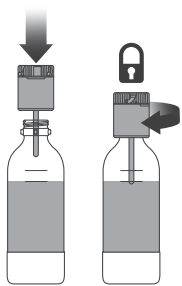
4.

CARBONATING NON-WATER DRINKS

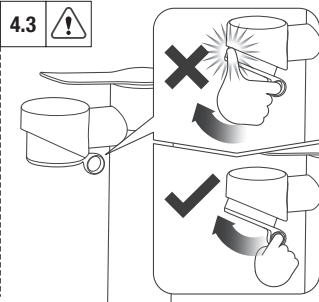
4.1



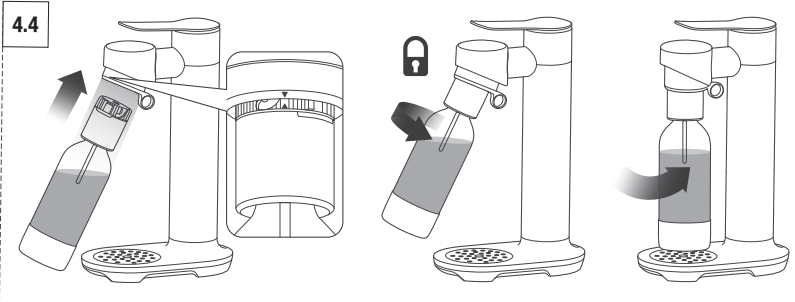
4.2



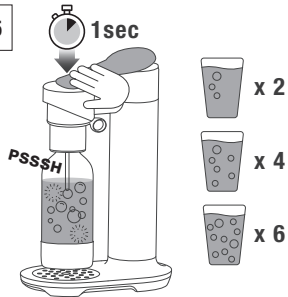
4.3



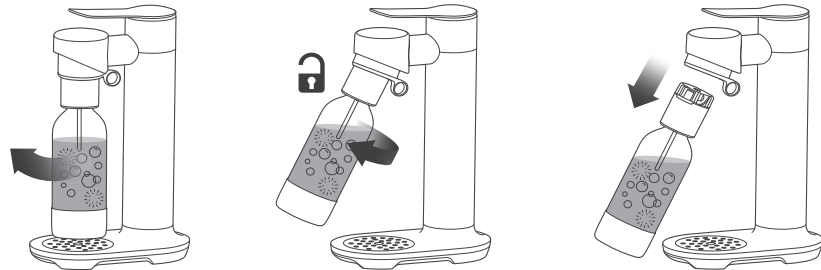
4.4



4.5



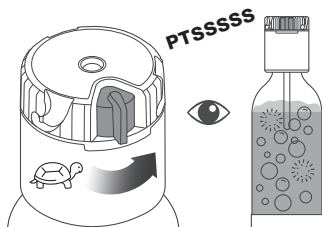
4.6



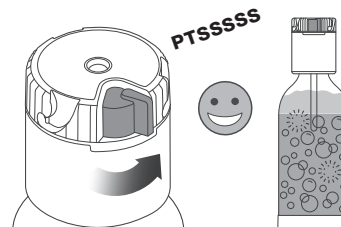
4.7



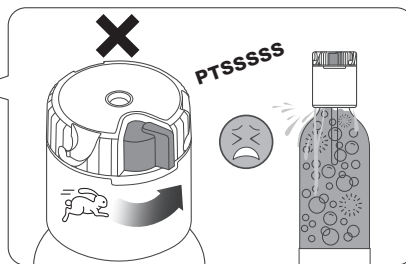
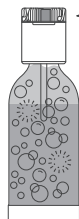
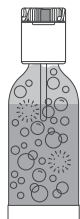
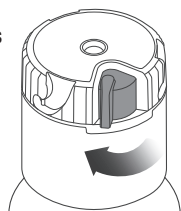
Move the switch to the center position to slowly release gas.



Move the switch all the way to the right when the sound of the gas releasing is no longer heard.



Turn the switch back to the left if the foam rises up too quickly.



4.8



5. TROUBLESHOOTING

PROBLEM	POSSIBLE CAUSES	EASY SOLUTIONS
Small pieces of ice in the bottle.	Small pieces of ice may appear and quickly melt in the bottle while carbonating.	<ul style="list-style-type: none">• Shorten each press so the efficiency of carbonation is not affected.
Little or no carbonation.	CO ₂ canister may be near empty or empty. NOTE: Cold water also maximises carbonation.	<ul style="list-style-type: none">• Replace the canister with a full one.• Check the CO₂ canister is properly screwed into place.
Bottle cannot be removed from the FusionCap™.	Excess CO ₂ has not been fully released.	<ul style="list-style-type: none">• Turn the red switch on the FusionCap™ all the way to the right to release all of the pressure.
Juice or other non-water liquids foam up too quickly.	Non-water liquids should not be filled passed the MIN line on the bottle. Varying amounts of sugar in drinks causes them to react and carbonate differently, so short presses on the lever will minimise over foaming.	<ul style="list-style-type: none">• Turn the red switch on the FusionCap™ back to the left to slow down the pressure release. Once foam has subsided, slowly turn the switch to the centre position before turning all the way to the right.

TIP

Soak the FusionCap™ every 30 days in max 40°C water for 5 mins



6.



For more information on:

- Cleaning • Troubleshooting • Useful Tips and Warranty

Check out the website, visit www.sageappliances.com

BILT. × **Sage**



GBR

BRG Appliances Limited
86–90 Paul Street, London, EC2A 4NE,
United Kingdom
Freephone (UK Landline): 0808 178 1650
Mobile Calls (National Rate): 0333 0142 970

DEU

AUT

Sage Appliances GmbH
Campus Fichtenhain 48, 47807 Krefeld,
Deutschland
Deutschland: 08005053104
Österreich: 0800 80 2551

FRA

Sage Appliances France SAS
Siège social : 66 avenue des Champs
Élysées – 75008 Paris
879 449 866 RCS Paris
France: 0800 903 235

IRE

Ireland
1800 932 369

ITL

Italy
800 909 773

BEL

Belgium
0800 54 155

NLD

Netherlands
0800 020 1741

LUX

Luxembourg
800 880 72

CHE

Switzerland
0800 009 933

ESP

Spain
900 838 534

POR

Portugal
0800 180 243

NO

Norway
80 024 976

SE

Sweden
0200 123 797

DK

Denmark
80 820 827

FI

Finland
0800 412 143

Registered in England & Wales No. 8223512
Registered in Germany No. HRB 81309 (AG Düsseldorf)
Registered in France No. 879 449 866 RCS

EN Due to continued product improvement, the products illustrated or photographed in this document may vary slightly from the actual product.

DEU Aufgrund unserer kontinuierlichen Produktverbesserungen kann die hier gezeigte Abbildung geringfügig vom tatsächlichen Produkt abweichen.

FRA En raison de leur amélioration continue, les produits représentés ou photographiés dans le présent document peuvent différer légèrement du produit réel.

ITL A causa del continuo miglioramento dei prodotti, il prodotto descritto o illustrato in questo documento può variare leggermente rispetto al prodotto reale.

NLD Vanwege voortdurende productverbeteringen, kunnen de afgebeelde producten in dit document licht afwijken van het eigenlijke product.

ESP Perfeccionamos nuestros productos continuamente, por lo que el artículo podría diferir ligeramente de la ilustración o la fotografía en este documento.

POR Devido à melhoria continua dos produtos, os produtos ilustrados ou fotografados neste documento podem variar ligeiramente do produto real.

DK På grund af løbende produktudvikling kan de illustrerede eller fotograferede produkter i dette dokument variere en smule fra det faktiske produkt.

SE På grund av kontinuerlig produktförbättring kan produkterna som visas i illustrationerna och fotografierna i detta dokument skilja sig något från den faktiska produkten.

FI Jatkuvan tuotekehittelyn seurauksena kuvituksen tuotteet eivät välttämättä ole täysin samanlaisia kuin varsinainen tuote.

NO På grunn av kontinuerlig produktutvikling kan produktene som er vist eller avfotografert i dette dokumentet, variere noe fra det faktiske produktet.

Copyright BRG Appliances 2023

BCA800 / SCA800 UK SG1_C23

Sage[™]

www.sageappliances.com